

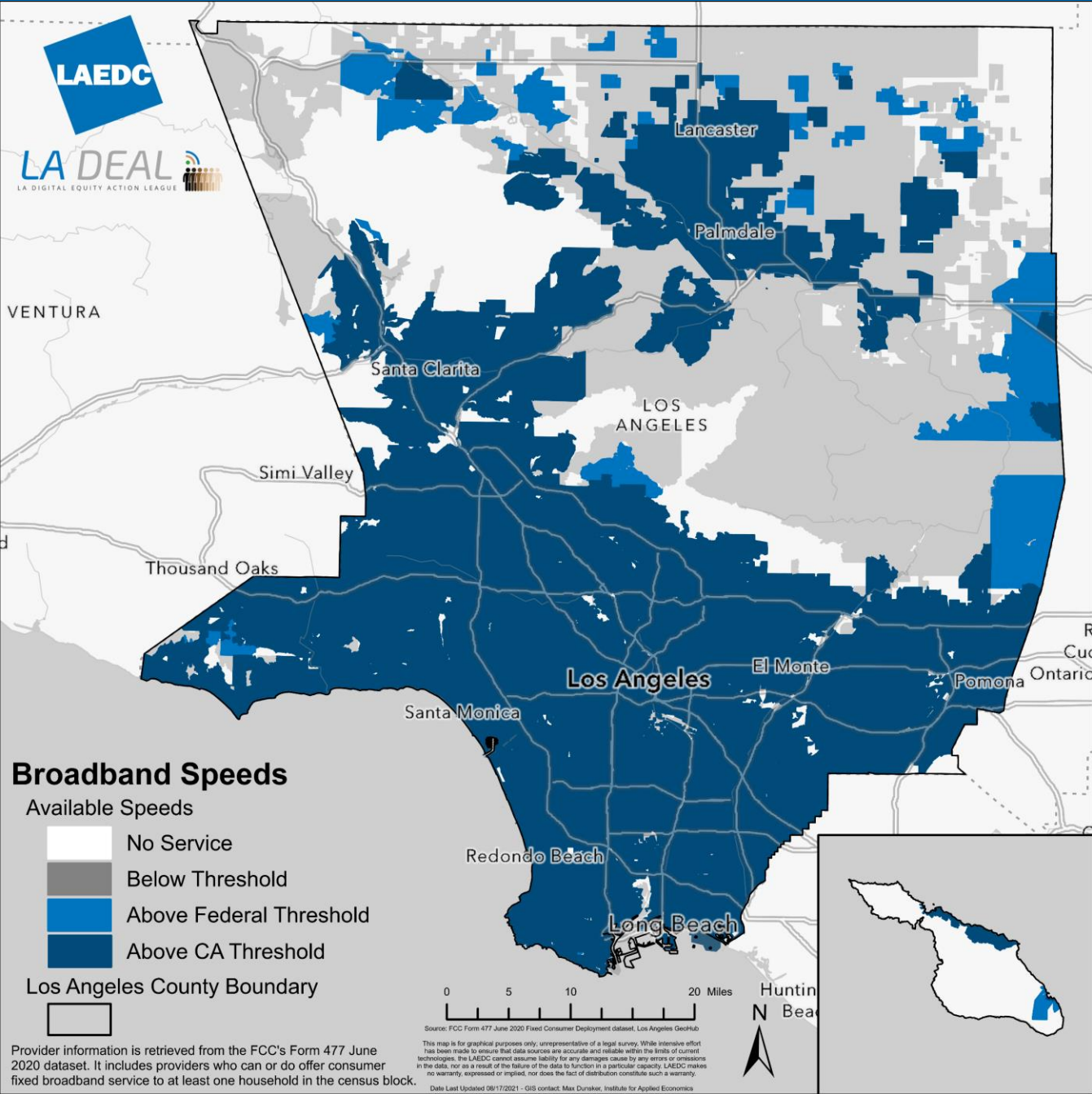


# The Digital Divide in LA County

- According to the 2015-2019 American Community Survey (ACS) estimates for Los Angeles County, approximately **416,636 households, 12.6% of households**, do not have internet access.
- A 2021 report by the USC Annenberg School of Communications found that nearly **1.5 million** k-12 students in Los Angeles County transitioned to virtual classes during the pandemic and that about **1 in 4 families** with school-age children in Los Angeles County do not have the resources necessary for distance learning.
- A 2021 USC CETF Survey found that **37% of those without a high school degree** lacked an internet connection in the home and that **1 in 4 Spanish speaking Hispanic households** lacked an internet connection, as did more than **1 in 5 seniors**.
- The 2015-2019 ACS estimates show that, across the county, **93% of households in census tracts where the median income is greater than that of LA County** had internet access and **89%** had a desktop or laptop at home; while only **82%** of households in **census tracts where the median income is less than that of LA County** had internet access and **71%** had a computer at home.

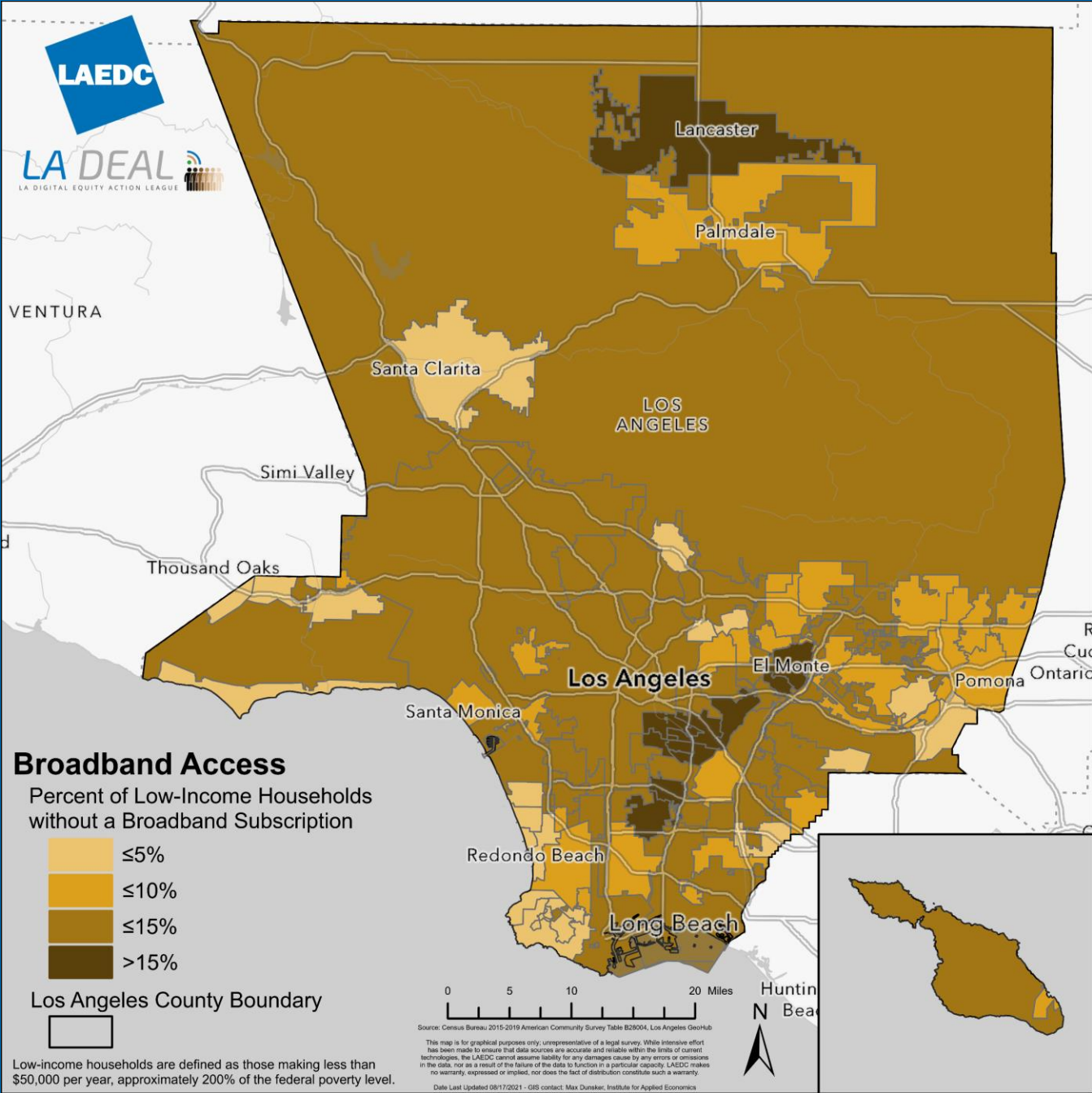


Map shows where broadband is available across LA County, with areas in blue offering speeds above the federal threshold (25 Mbps download and 3 Mbps upload) and those in dark blue offering speeds above the CA SB 156 threshold (100 Mbps download and 20 Mbps upload) in each census block.



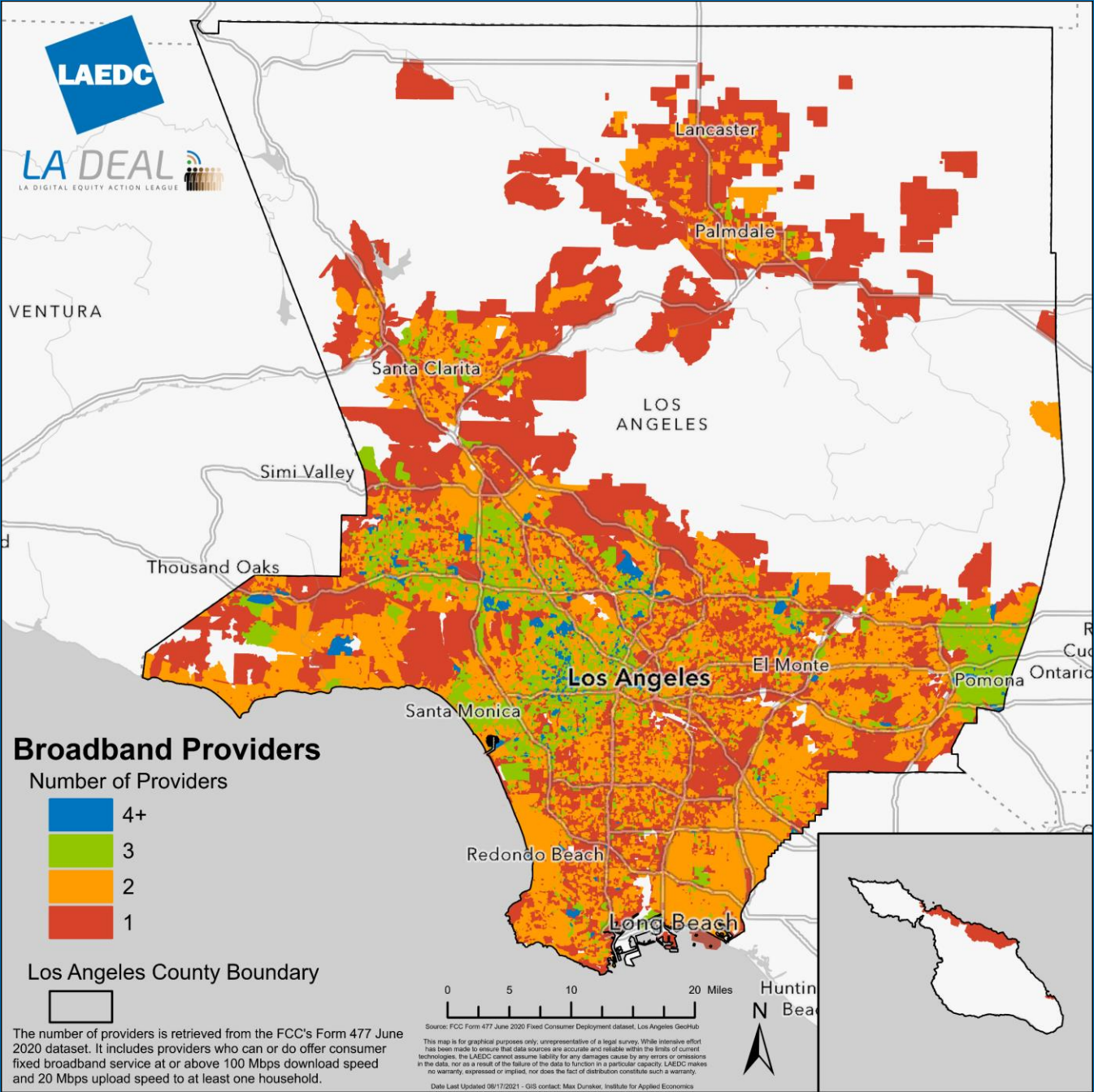
Low-income households across the county are far less likely to have a broadband subscription.

Data is shown by the cities of LA County.



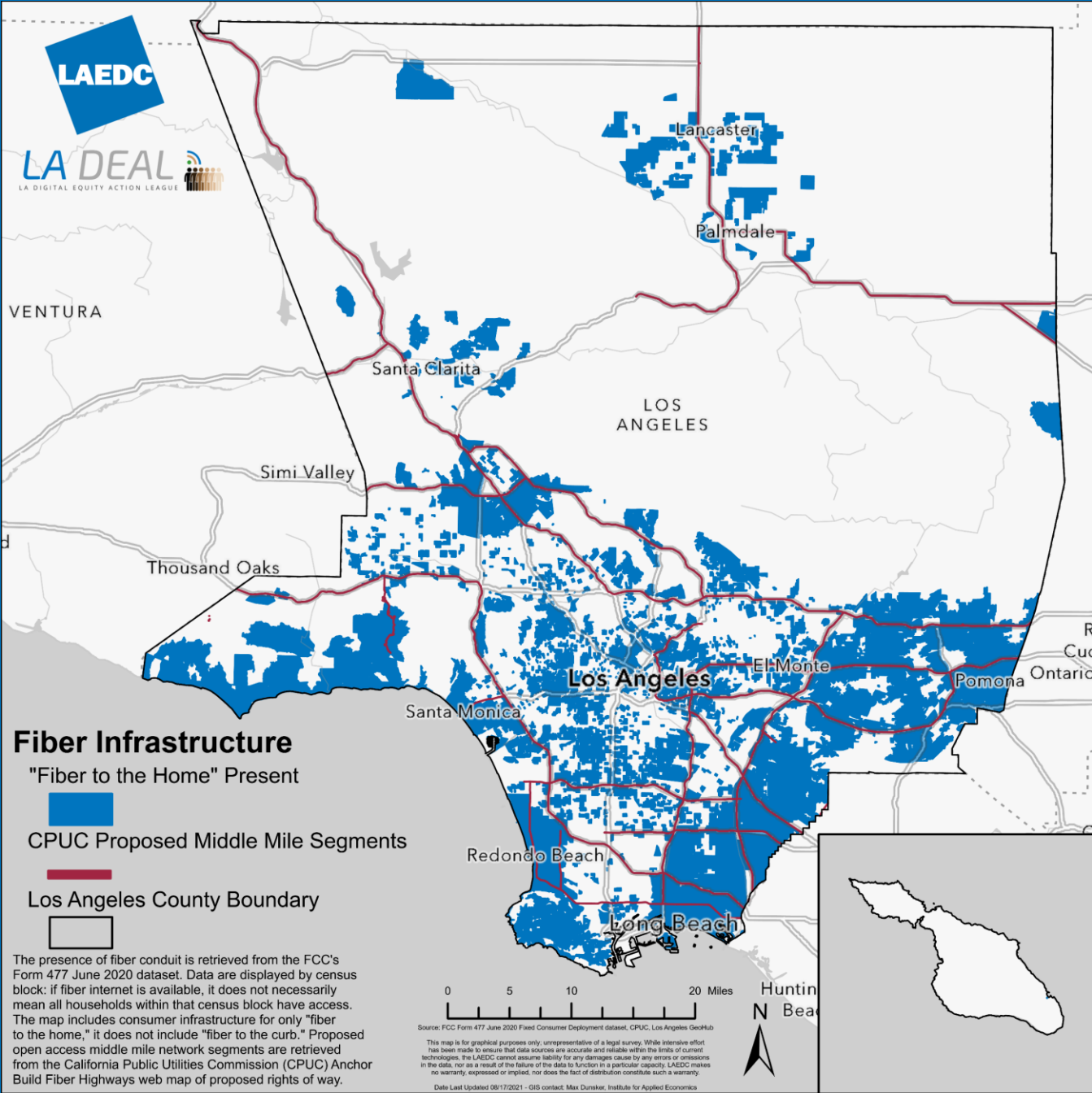
The number of providers with speeds that exceed the threshold set in SB 156 (100 Mbps download and 20 Mbps upload) in each census block.

Providers	County Area (%)	Households (%)
0	53.56%	0.29%
1	21.50%	21.44%
2	18.67%	52.39%
3	5.48%	22.41%
4+	0.79%	3.47%



Map created by LAEDC Institute for Applied Economics

Open access middle mile fiber is needed to increase affordable “fiber to the home” throughout LA County, particularly to unserved and underserved areas.



On August 19, the CPUC approved the Regional Broadband Consortium Grant Application for the Los Angeles Digital Equity Action League (LA DEAL), led by LAEDC and UNITE-LA, to facilitate the deployment of broadband services to unserved and underserved communities in Los Angeles County.



Twenty meetings have taken place between five working groups to explore how all residents can gain access to affordable, reliable broadband and related devices and digital literacy training they require for good jobs, lifelong learning, civic and cultural participation, and access to essential healthcare and other services



# Digital Equity Demonstration Project

- LAEDC has partnered with Supervisor Holly Mitchell's office to conduct a Digital Equity Demonstration Project in the underserved communities of Lynwood and Willowbrook.
  - Lynwood households without broadband internet: 28.8%
  - Willowbrook households without broadband internet: 35.4%
- Community meetings are currently underway with students, parents, seniors, small business owners, etc. Each meeting is being hosted and facilitated by trusted community partners to elicit authentic community voice to better understand the experience of local residents with respect to broadband.
- Research is simultaneously being conducted into the availability of affordable, reliable high-speed internet, devices, and digital literacy training in these two communities.
- Findings will be reported this fall to help inform county policy.



**LAEDC**

**LA DEAL**  
LA DIGITAL EQUITY ACTION LEAGUE



[www.ladeal.org](http://www.ladeal.org)